

## Technische Daten

### Halbflansch, 3.000 psi

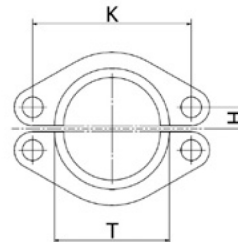
**Material:**  
Stahl

T (Zoll) T (Inch)	K (mm) K (mm)	H (mm) H (mm)	VE PU	Artikelnummer Article number
1/2"	38,1	8,74	1	VC-CSF08
3/4"	47,63	11,13	1	VC-CSF12
1"	52,37	13,08	1	VC-CSF16
1.1/4"	58,72	15,09	1	VC-CSF20

## Technical data

### Cut Split Flange, 3.000 psi

**Material:**  
Steel



## Technische Daten

### Halbflansch, 6.000 psi

**Material:**  
Stahl

T (Zoll) T (Inch)	K (mm) K (mm)	H (mm) H (mm)	VE PU	Artikelnummer Article number
1/2"	40,49	9,12	1	VC-CSF6-08
3/4"	50,8	11,91	1	VC-CSF6-12
1"	57,15	13,89	1	VC-CSF6-16
1.1/4"	66,68	15,88	1	VC-CSF6-20

## Technical data

### Cut Split Flange, 6.000 psi

**Material:**  
Steel