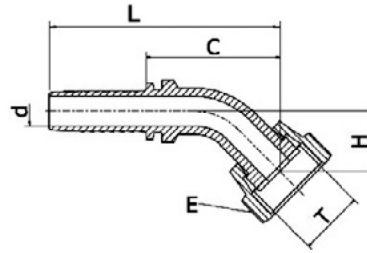


# ORFS 45°, Überwurfmutter LORF 45°

ORFS 45°, WITH UNION NUT LORF 45°

PRESSNIPPEL  
SWAGE FITTINGS



## Technische Daten

ORFS-Dichtform mit Überwurfmutter, UN-/UNF-/UNS-Gewinde

**Material:**  
Automatenstahl  
**Oberfläche:**  
Grill

## Technical data

ORFS sealing form, with union nut, UN/UNF/UNS-Thread

**Material:**  
Free cutting steel  
**Surface:**  
Grill

DN Nominal width	Size Size	Zoll Inch	Anschluss T Thread T	Abzugsmaß C (mm) Cut-off C (mm)	d (mm) d (mm)	E (mm) E (mm)	H (mm) H (mm)	L (mm) L (mm)	VE PU	Artikelnummer Article number
<b>6</b>	<b>04</b>	<b>1/4</b>	<b>9/16-18</b>	<b>38,5</b>	<b>4,0</b>	<b>17</b>	<b>14,0</b>	<b>67,0</b>	<b>5</b>	<b>VC04LORF45S04</b>
6	04	1/4	11/16-16	36,0	4,0	22	14,0	63,5	5	VC06LORF45S04
<b>10</b>	<b>06</b>	<b>3/8</b>	<b>11/16-16</b>	<b>50,0</b>	<b>7,0</b>	<b>22</b>	<b>19,0</b>	<b>78,5</b>	<b>5</b>	<b>VC06LORF45S06</b>
10	06	3/8	13/16-16	42,0	7,0	24	17,0	71,5	5	VC08LORF45S06
<b>12</b>	<b>08</b>	<b>1/2</b>	<b>13/16-16</b>	<b>58,0</b>	<b>9,5</b>	<b>24</b>	<b>18,0</b>	<b>78,5</b>	<b>5</b>	<b>VC08LORF45S08</b>
12	08	1/2	1-14	61,0	9,5	30	20,0	74,5	5	VC10LORF45S08
<b>16</b>	<b>10</b>	<b>5/8</b>	<b>1-14</b>	<b>55,0</b>	<b>12,0</b>	<b>30</b>	<b>20,0</b>	<b>91,5</b>	<b>5</b>	<b>VC10LORF45S10</b>
<b>19</b>	<b>12</b>	<b>3/4</b>	<b>1.3/16-12</b>	<b>65,0</b>	<b>15,0</b>	<b>36</b>	<b>26,0</b>	<b>114,5</b>	<b>5</b>	<b>VC12LORF45S12</b>
<b>25</b>	<b>16</b>	<b>1</b>	<b>1.7/16-12</b>	<b>88,5</b>	<b>20,0</b>	<b>41</b>	<b>27,0</b>	<b>137,0</b>	<b>1</b>	<b>VC16LORF45S16</b>

Standardnennweiten in **Fettdruck**, standard dimensions in **bold print**